

T 7 N

R 2E



Office of the Monroe County Surveyor
Trohn Enright-Randolph

Health Services Building
119 West 7th Street
Bloomington, IN 47404
Phone: (812) 349-2570

Dear User,

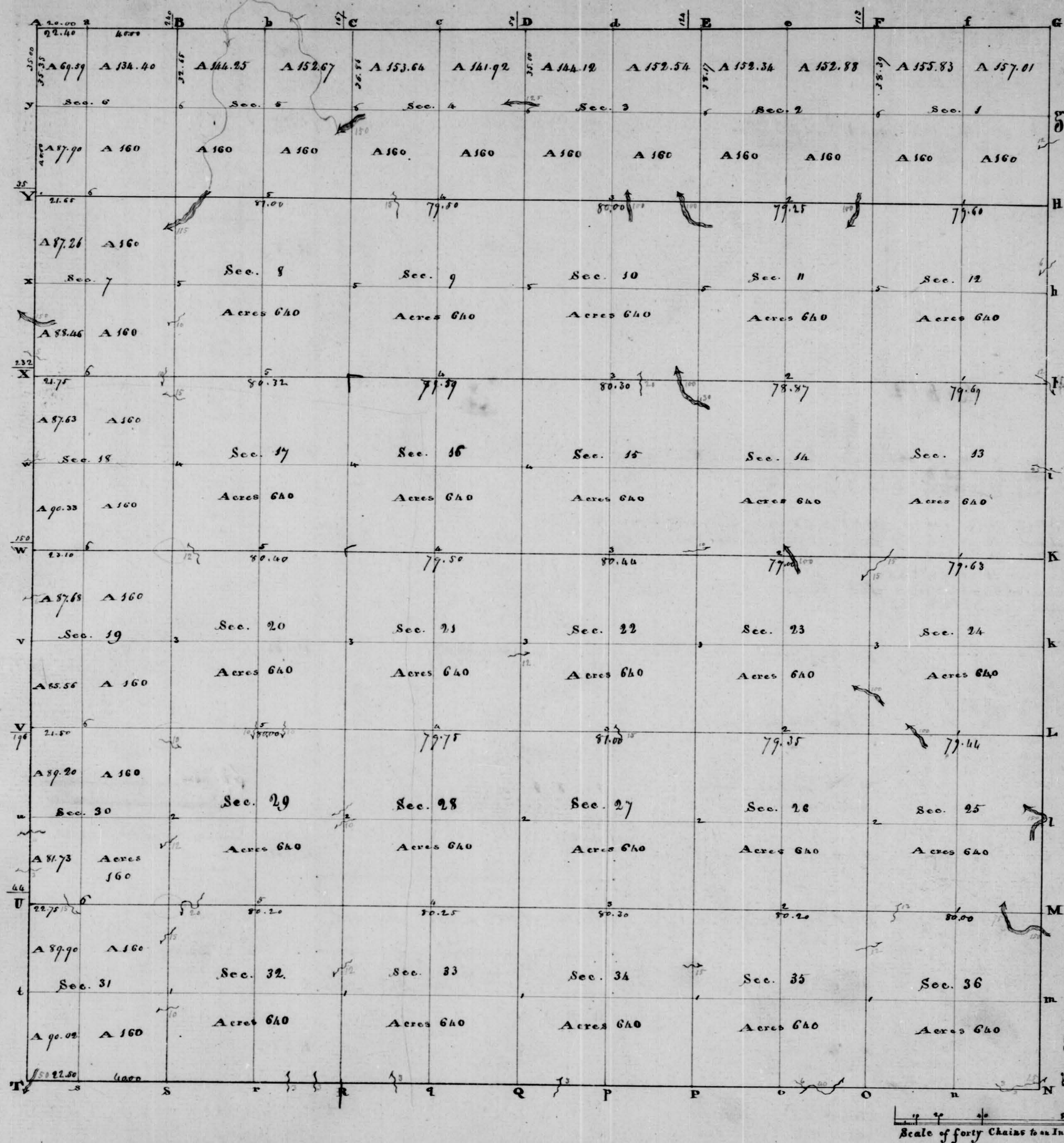
The following images were obtained in 2017 by the Office of the Monroe County Surveyor from the State Imaging and Microfilm Laboratory at the Indiana State Archives. The field notes and plats for Brown County are stored on microfilm Reel 5923 at the Indiana State Archives. Each page provided by the State Imaging and Microfilm Laboratory is approximately 18MB. Our office combined the pages by Township & Range and reduced the resulting pdfs. This process may have caused some degradation in quality. We will provide unreduced images of specific pages if required. Please contact us at 812-349-2570 or at SurveyorsOffice@co.monroe.in.us to request a higher quality image of any specific page.

The pdfs are bookmarked with the original page numbers as assigned by the State Imaging and Microfilm Laboratory.

Be prepared to provide the county name, reel number, and the required page numbers when requesting full sized images.

If you would like a DVD of an entire county, please provide us with one DVD per county along with a self-addressed, stamped envelope.

Trohn Enright-Randolph
Monroe County Surveyor



Township N^o VII North of the Base Line Range N^o I East of 2nd Meridian. Surveyed by Arthur Henrie 1815

Description of the Soil on the interior Sectional lines.

Between Sections	Quality, &c.	Between Sections	Between Sections	Between Sections	
35 & 36	Land Silty Thin Soil - Timber Chestnut, Oak & Hickory	35 & 36	Land Silty Thin Soil - Timber Chestnut, Oak & Hickory	31 & 32	Land Silty Thin Soil - Timber Chestnut, Oak & Hickory
25. 36	ditto	27. 34	ditto	29. 32	ditto
25. 26	ditto	27. 28	ditto	29. 30	ditto
24. 25	ditto	22. 24	ditto	20. 29	ditto
23. 24	ditto	21. 22	ditto	19. 20	ditto
13. 24	ditto	15. 22	ditto	17. 20	ditto
12. 14	ditto	15. 16	ditto	17. 18	ditto
12. 13	ditto	10. 15	ditto	8. 14	ditto
11. 12	ditto	9. 10	ditto	7. 8	ditto
1. 12	ditto	3. 10	ditto	5. 8	ditto
1. 8	ditto	3. 4	ditto	5. 6	ditto
34. 35	ditto	32. 33	ditto	6. 7	ditto
26. 35	ditto	28. 33	ditto	7. 18	ditto
26. 27	ditto	28. 29	ditto	18. 19	ditto
23. 26	ditto	21. 28	ditto	19. 30	ditto
22. 23	ditto	20. 21	ditto	30. 31	ditto
14. 23	ditto	16. 21	ditto		
14. 15	ditto	16. 17	ditto		
14. 14	ditto	9. 16	ditto		
10. 11	ditto	8. 9	ditto		
2. 11	ditto	4. 9	ditto		
2. 3	ditto	4. 5	ditto		

West	Between Secs 6 & 7	64.85	Set post on N. Boundary 25 lks S. of Corner
8.00	A. Brook 12 lks S.W.		Beech 20 N 34 E 16
40.00	gr. Sec. Corner Hickory 6 N 38 E 13		do 10 S 57 W 16
	W. Oak 18 N 62 W 34		Land Rolling. Oak. Beech. Sugar V.
68.50	A. Brook 10 lks S.W.		March 26 th 1814
70.50	Set post on the West Boundary 158 lks	East	Between Secs 10 & 12 on Boundary
	North of Corner W. Oak 10 N 55 E 12	40.00	Temporary gr. Sec. post
	B. Oak 10 S 6 W 16	49.84	Intersected N. White 20 lks N. of Corner
	Land Hilly & very brushy covered with Briars		Land the same very Hilly
West	Between Secs 7 & 8	West	Corrected
15.00	A. Brook 10 lks South	39.72	gr. Sec. Corner B. Oak 6 West 22
40.00	gr. Sec. Corner Hickory 12 N 81 E 25		do 20 S 83 E 26
	W. Oak 12 S 61 W 27	49.84	Section Corner
68.70	Set post on the West Boundary 62 lks	North	Between Secs 10 & 12
	North of Sec. Corner W. Oak 20 N 71 E 32	7.00	A. Brook 10 lks N. E
	do 20 S 49 W 25	32.50	A. W. Oak 20 in. diam.
	Land the same	40.00	gr. Sec. Corner Gum 10 N 63 W 13
West	Between Secs 18 & 19		Hickory 6 S 28 E 9
40.00	gr. Sec. Corner Elm 10 N 81 W 29	87.30	Set post on N. Boundary 125 lks E. of Corner
	W. Oak 20 S 18 E 27		Gum 10 S 41 E 27
47.56	Set post on the N. boundary 41 lks N. of Corner		W. Oak 8 S 41 W 25
	W. Oak 20 West 1		Land the same
	Beech 10 N 10 E 17		Surveyed by Arthur Oliver D. S.
	Land the same		
West	Between Secs 19 & 20		
23.00	A. W. Oak 20 in. diam.		
40.00	gr. Sec. Corner Beech 18 S 73 E 38		
	Ironwood 6 S 17 W 14		
42.00	A. Brook 10 lks S.W.		
65.71	Set post on N. Boundary 36 lks S. of Corner		
	W. Oak 12 N 72 E 12		
	Beech 18 N 20 W 4		
	Land the same		
West	Between Secs 30 & 31		
40.00	gr. Sec. Corner Sugar 10 S 58 E 15		
	do 20 N 51 E 23		

Township N. 7 North, Range N. 2 East 2nd Mer.

Range line - Var.		North	
March 26 th 1814		On the East Side of Sec. 12	
North	From the Corner of Towns 6 & 7 Ranges 2 & 3 East	1.00	A. Brook 12 lks S 25 E
3.00	On the East Side of Sec. 13	30.00	A. Hickory 9 in. diam.
40.00	A. Brook 25 lks East N. 20 E.	40.00	A. W. Oak 11 S 33 W 10 } Poor Hilly land
	gr. Sec. Corner Maple 18 N 73 W 23		Maple 12 N 54 E 18 } Oak. Dogwood V.
	W. Oak 20 N 50 E 20 } Hilly Oak	56.50	A. Brook 6 lks South
65.50	A. Beech 30 in. diam.	80.00	Corner of Secs 10 & 12
75.50	A. Beech 150 lks N.W.		Maple 10 S 40 E 14
80.00	Corner of Secs 25 & 36		Hickory 3 S 57 W 15 } Land & Timber same
	Beech 8 N 43 E 4 } Hilly land as	North	On the East Side of Sec. 1
	Hickory 4 S 83 W 18 } above	26.00	A. W. Oak 14 in. diam.
North	On the East Side of Sec. 25	29.50	A. Brook 12 lks S.W.
34.00	A. B. Oak 25 in. diam.	40.00	A. Chestnut Oak 13 S 75 W 37
40.00	gr. Sec. Corner Sugar 5 N 50 E 10		W. Oak 13 S 20 W 31
	Box 3 N 8 W 12 } No L. Bottom	75.00	A. B. Oak 15 in. diam.
44.00	A. Beech 150 lks N. E	80.00	Corner to Towns 7 & 8 Ranges 2 & 3 East
47.00	Same 150 lks N.W.		A. Beech 12 N 45 E 21
67.50	A. B. Oak 16 in. diam.		do 10 S 65 W 10 } Poor Hilly Beech
80.00	Corner of Secs 24 & 25		do 10 S 65 W 10 } Land
	W. Oak 14 S 80 W 12 } Land poor & Hilly	Township Lines	March 25 th 1811
	do 24 N 23 E 50 } Timber W. Oak. Beech V.	Between Towns 6 & 7 Range 2 East	
North	On the East Side of Sec. 24	West	On the South Side of Sec. 36
9.50	A. W. Oak 14 in. diam.	10.00	A. Brook 8 lks N. E
40.00	gr. Sec. Corner B. Oak 12 N 38 W 14	24.00	A. Brook 3 lks S. E
	do 10 S 80 W 27 } Land same	26.00	A. Sugar 12 in. diam.
60.25	A. Hickory 14 in. diam.	40.00	Post W. Oak 16 N 86 E 23 } Hilly poor Oak land
80.00	Corner of Secs 13 & 24	80.00	Corner to Secs 35 & 36
	W. Oak 13 S 20 W 14 } Land & Timber same		B. Oak 36 N 15 W 11 } Land the same
	do 16 N 4 E 23 }		do 6 S 15 W 10 }
North	On the East Side of Sec. 13	West	On the South Side of Sec. 35
14.75	A. W. Oak 18 in. diam.	18.00	A. Brook 40 lks N. E
40.00	gr. Sec. Corner W. Oak 8 N 10 W 13 } Land poor	22.00	Soft same
	Mulberry 4 S 35 E 34 } Hilly Oak	30.00	A. Brook 6 lks S.W.
40.50	A. Brook 25 lks N.W.	40.00	Post Beech 18 S 56 E 32 } Hilly land. Oak.
80.00	Corner of Secs 12 & 13 W. Oak 18 N 25 W 36		Sugar 6 N 35 W 27 } Beech Sugar
	Beech 4 S 27 E 6	80.00	Corner to Secs 34 & 35 Gum 30 S 4 W 34
	Land & Timber as above		No other trees

West	On the South Side of Sec. 34	North	Between Sec. 35 & 36
40.00	A. Poplar 36 S 20 W 7 } Sully Oak land	40.00	gr. Sec. Corner Poplar 15 Corner tree
	R. Oak 16 S 81 E 10 }	66.50	A. Brook 12 lks S. E
60.00	A. Brook 3 lks S. E	80.00	Set post corner to Sec. 25, 26, 35, 36
80.00	Corner to Sec. 33 & 34		Beech 10 S 48 E 13
	Chesnut 30 S 77 W 7 } Sand Same		do 15 S 5 W 30
	do 12 S 49 E 15 }		Land Sully thru Soil. Chs. Oak & Hickory
West	On the South Side of Sec. 33	East	Between Sec. 25 & 36 On Random
40.00	A. Hickory 24 S 4 E 8 } over hills & rough	13.00	A. Brook 15 lks S. E
	Chesnut Oak 12 S 17 E 12 } Land. Oak. Chesnut	40.00	Temporary gr. Sec. post
58.00	A. Brook 3 lks S. W	66.25	A. Brook 5 lks S. W
80.00	Corner to Sec. 32 & 33	80.00	Intersected N & S line 10 lks S. of corner
	Chesnut Oak 18 S 45 E 9 } Mills & Bruns		Land the Same
	Dogwood 5 S 45 W 8 }	West	Corrected
West	On the South Side of Sec. 32	40.00	gr. Sec. Corner B. Oak 10 S 36 E 20
10.00	A. Brook 3 lks North		do 6 S 61 W 13
25.00	Same - North	80.00	Section Corner
40.00	A. W. Oak 10 S 20 E 11 } Sully Oak land	North	Between Sec. 25 & 26
	R. Oak 18 S 40 E 13 }	40.00	gr. Sec. Corner W. Oak 18 S 84 W 30
80.00	Corner to Sec. 31 & 32		Hickory 3 S 4 E 10
	R. Oak 18 S 70 E 19 } Sand & Timber Same	80.00	Set post corner to Sec. 23, 24, 25, 26
	W. Oak 8 S 84 W 34 }		B. Oak 30 S 42 W 15
West	On the South Side of Sec. 31		Gum 8 S 75 E 26
40.00	A. Hickory 7 S 55 W 25		Land the Same
	do 4 S 63 E 31	East	Between Sec. 24 & 25 On Random
61.00	A. Brook 50 lks S. W	27.00	A. Brook 100 lks S. W
80.00	Set a Temporary post	40.00	Temporary gr. Sec. post
	Surveyed by H. C. Holmes D. S.	79.44	Intersected N & S line at Sec. Corner
			Land the Same
		West	Between Sec. 24 & 25 Corrected
		39.72	gr. Sec. Corner Gum 12 S 85 E 5
			Beech 5 S 78 W 26
		79.44	Section Corner

North	Between Sec ^s 23 & 24	North	Between Sec ^s 11 & 12
20.00	A. Brook 100 lks S.W	15.72	A. Beech 15 in. diam.
40.00	gr. Sec. corner Beech 3 S 38 E 5 Poplar 4 S 14 W 6	40.00	gr. Sec. corner Beech 12 S 63 E 15 do 10 S 79 E 11
75.00	A. Brook 15 lks S.W	80.00	Set post corner to Sec ^s 1, 2, 11, 12 B. Oak 15 S 11 E 8 do 10 S 63 E 12
80.00	Set post corner to Sec ^s 1, 13, 14, 23, 24 W. Oak 30 S 35 E 28 do 20 S 23 W 29		Land the Same
	Land the Same	East	Between Sec ^s 1 & 12 On Random
East	Between Sec ^s 13 & 24 On Random	40.00	Temporary gr. Sec. post
10.15	A. Brook 15 lks S.W	79.60	Intersected N & S line 7 lks S. of corner
40.00	Temporary gr. Sec. post		Land the Same
79.63	Intersected N & S line 80 lks S. of corner	West	Corrected
	Land the Same	39.80	gr. Sec. corner B. Oak 30 S 79 E 9 do 24 S 46 E 15
West	Corrected	79.60	Section corner
39.81 1/2	gr. Sec. corner B. Oak 15 S 29 W 4 Hickory 11 S 49 E 24	North	Between Sec ^s 1 & 2
79.63	Section corner	11.69	A. B. Oak 40 in. diam.
North	Between Sec ^s 13 & 14	40.00	gr. Sec. corner Beech 30 S 55 W 11 Chs 15 S 5 W 19
30.25	A. Sugar 15 in. diam.	78.39	Set post on N. Boundary 113 lks E. of corner Beech 15 S 89 W 7 W. Oak 24 S 66 W 15
40.00	gr. Sec. corner Beech 15 S 60 E 15 B. Oak 20 S 12 E 23		Land the Same
80.00	Set post corner of Sec ^s 11, 12, 13, 14 Poplar 20 S 8 E 30 Beech 15 S 30 W 18	North	Between Sec ^s 34 & 35
	Land the Same	40.00	gr. Sec. corner B. Oak 6 S 56 W 7 Hickory 3 S 32 W 7
East	Between Sec ^s 12 & 13 On Random	56.00	A. Brook 15 lks East
40.00	Temporary gr. Sec. post	80.00	Set post corner to Sec ^s 26, 27, 34, 35 B. Oak 15 S 33 E 6 Hickory 4 S 9 E 28
79.69	Intersected N & S line 28 lks S. of corner		Land the Same
	Land the Same	East	Between Sec ^s 26 & 35 On Random
West	Corrected	40.00	Temporary gr. Sec. post
39.84 1/2	gr. Sec. corner Maple 15 S 25 E 11 W. Oak 14 S 45 E 6	80.20	Intersected N & S line 25 lks S. of corner
79.69	Section corner		Land the Same

West Corrected Between Secs 26 & 35
 40.10 gr. Sec. corner B. Oak 3 Sts N 26
 W. Oak 15 S 30 E 27
 80.20 Section corner
 North Between Secs 26 & 27
 40.00 gr. Sec. corner W. Oak 30 St 6 N 12
 do 15 S 42 N 16
 80.00 Set post corner to Secs 22, 23, 24, 27
 Beech 10 St 67 N 20
 do 10 S 77 E 37
 Land the Same
 East Between Secs 23 & 26 On Random
 40.00 Temporary gr. Sec. post
 79.35 Intersected St V line 50 lbs St. of corner
 Land the Same
 West Corrected
 39.67 gr. Sec. corner Sugar 10 St 45 N 23
 Hickory 12 S 33 E 12
 79.35 Section corner
 North Between Secs 22 & 23
 40.00 gr. Sec. corner Beech 8 S 22 E 5
 W. Oak 4 St 46 N 26
 80.00 Set post corner of Secs 14, 15, 22, 23
 W. Oak 15 St 55 E 8
 do 15 S 50 N 12
 Land the Same
 East Between Secs 14 & 23 On Random
 40.00 Temporary gr. Sec. post
 41.50 H. Brook 100 lbs North
 79.00 Intersected St V line 13 lbs St. of corner
 Land the Same
 West Between Secs 14 & 23 Corrected
 39.50 gr. Sec. corner Sugar 10 S 31 N 10
 Beech 30 S 40 E 20
 79.00 Section corner

North Between Secs 14 & 15
 5.00 H. Brook 10 lbs St. E
 40.00 gr. Sec. corner Ironwood 4 St 14 N 15
 Beech 5 St 43 N 14
 70.70 H. Brook 150 lbs St. W
 80.00 Set post corner of Secs 10, 11, 14, 15
 Beech 8 St 87 N 3
 do 10 S 97 N 22
 Land the Same
 East Between Secs 11 & 14 On Random
 40.00 Temporary gr. Sec. post
 78.87 Intersected St V line 12 lbs St. of corner
 Land the Same
 West Corrected
 39.43 gr. Sec. corner Dogwood 4 St 10 E 12
 Ash 3 S 58 E 10
 78.87 Section corner
 North Between Secs 10 & 11
 40.00 gr. Sec. corner B. Oak 4 St 10 N 3
 do 15 S 1 E 33
 70.00 H. Brook 100 lbs St. W
 80.00 Set post corner of Secs 2, 3, 10, 11
 Gum 5 S 5 N 24
 Beech 12 S 78 E 35
 Land the Same
 East Between Secs 2 & 11 On Random
 40.00 Temporary gr. Sec. corner
 74.00 H. Brook 100 lbs North
 79.25 Intersected St V line 75 lbs St. of post
 Land the Same
 West Corrected
 39.62 gr. Sec. corner Beech 8 St 29 N 8
 do 5 St 9 N 14
 79.25 Section corner

North Between Secs 2 & 3
 24.50 H. W. Oak 30 in. diam?
 40.00 gr. Sec. corner Sugar 15 S 28 E 26
 Dogwood 5 St 11 N 22
 78.17 Set post on St. Boundary 1.24 lbs E. of corner
 B. Oak 15 S 71 E 8
 W. Oak 30 St 58 N 34
 Land the Same
 North Between Secs 33 & 34
 40.00 gr. Sec. corner Sugar 12 S 89 N 12
 Red bud 2 St 80 E 12
 80.00 Set post corner to Secs 27, 28, 33, 34
 Gum 8 S 2 E 20
 B. Oak 6 St 62 N 11
 Land the Same
 East Between Secs 27 & 34 On Random
 40.00 Temporary gr. Sec. post
 80.30 Intersected St V line 60 lbs St. of corner
 Land the Same
 West Corrected
 40.15 gr. Sec. corner Beech 8 St 60 E 5
 B. Oak 30 S 60 N 17
 80.30 Section corner
 North Between Secs 27 & 28
 40.00 gr. Sec. corner Dogwood 3 St 44 N 12
 do 4 S 26 E 23
 41.20 H. Hickory 25 in. diam?
 80.00 Set post corner to Secs 21, 22, 27, 28
 B. Oak 15 S 80 E 12
 Poplar 40 St 48 N 17
 Land the Same
 East Between Secs 22 & 27 On Random
 40.00 Temporary gr. Sec. post
 41.50 H. Brook 15 lbs St. W
 81.00 Intersected St V line 30 lbs St. of corner
 Land the Same

West Corrected Between Secs 28 & 34
 40.50 gr. Sec. corner Sugar 8 St 52 N 19
 Hickory 8 S 26 E 16
 81.00 Section corner
 North Between Secs 21 & 22
 38.50 H. Brook 12 lbs East
 40.00 gr. Sec. corner Beech 12 corner tree
 80.00 Set post corner to Secs 15, 16, 21, 22
 Beech 4 S 36 E 27
 do 4 St 68 N 22
 Land the Same
 East Between Secs 15 & 22 On Random
 40.00 Temporary gr. Sec. post
 80.44 Intersected St V line 30 lbs S. of corner
 Land the Same
 West Between Secs 15 & 22 Corrected
 40.22 gr. Sec. corner Maple 5 S 29 N 13
 W. Oak 5 St 64 E 23
 80.44 Section corner
 North Between Secs 15 & 16
 38.00 H. B. Oak 30 in. diam?
 40.00 gr. Sec. corner Hickory 4 St 57 N 6
 W. Oak 6 St 2 E 23
 80.00 Set post corner to Secs 7, 10, 15, 16
 B. Oak 15 S 16 E 36
 W. Oak 10 St 44 E 19
 Land the Same
 East Between Secs 14 & 15 On Random
 40.00 Temporary gr. Sec. post
 54.00 H. Brook 20 lbs North
 79.00 H. Brook 100 lbs North
 80.30 Intersected St V line 50 lbs S. of corner
 Land the Same

West	Between Sec ^s 10 & 15 Corrected	80.00	Set post corner of Sec ^s 28, 29, 32, 33
40.15	gr. Sec. corner Dogwood 3 S 4 E 21		W. Oak 15 S 30 W 39
	do 3 S 10 E 12		Maple 4 S 38 E 33
80.30	Section corner		Same the same
North	Between Sec ^s 7 & 10	East	Between Sec ^s 28 & 33 On Random
35.00	H. Grove 20 in. diam.	40.00	Temporary gr. Sec. post
40.00	gr. Sec. corner Beech 12 S 31 W 8	80.25	Intersected S & S line 26 lbs N. of corner
	do 12 S 44 E 19		Same the same
80.00	Set post corner to Sec ^s 3, 4, 9, 10	West	Corrected
	W. Oak 10 S 11 E 23	40.12	gr. Sec. corner B. Oak 8 S 32 W 23
	do 15 S 50 W 34		do 26 S 2 E 34
	Same the same	80.25	Section corner
East	Between Sec ^s 3 & 10 On Random	North	Between Sec ^s 28 & 29
40.00	Temporary gr. Sec. post	40.00	gr. Sec. corner B. Oak 10 S 33 W 13
45.00	H. Brook 100 lbs S. W		do 4 S 25 E 18
70.00	H. Brook same	49.00	H. Brook 10 lbs S. W
80.00	Intersected S & S line 50 lbs N. of corner	80.00	Set post corner to Sec ^s 20, 21, 28, 29
	Same the same		Dogwood 3 S 32 E 7
West	Corrected		do 3 S 41 W 7
40.00	gr. Sec. corner Beech 10 S 48 E 13		Same the same
	do 15 S 19 W 24	East	Between Sec ^s 21 & 28 On Random
80.00	Section corner	40.00	Temporary gr. Sec. post
North	Between Sec ^s 3 & 4	79.75	Intersected S & S line 60 lbs N. of corner
40.00	gr. Sec. corner Beech 30 S 8 W 29		Same the same
	do 5 S 10 E 25	West	Corrected
45.00	H. Brook 125 lbs S. W	39.8 1/2	gr. Sec. corner Chestnut, Oak 12 S 25 W 18
75.00	Set post on N. Boundary 50 lbs E. of corner		do 20 S 5 W 25
	Beech 10 S 30 E 10	79.75	Section corner
	do 8 S 49 W 20	North	Between Sec ^s 20 & 21
	Same the same	40.00	gr. Sec. corner Chestnut, Oak 15 S 56 E 14
North	Between Sec ^s 32 & 33		Dogwood 3 S 50 W 10
40.00	gr. Sec. corner Hickory 6 S 42 W 8	80.00	Set post corner of Sec ^s 16, 17, 20, 21
	W. Oak 15 S 85 E 25		Gum 5 S 44 W 26
53.00	H. Brook 12 lbs S. W		do 4 S 60 E 29
			Same the same

East	Between Sec ^s 16 & 21 On Random	East	Between Sec ^s 4 & 9 On Random
40.00	Temporary gr. Sec. post	21.00	H. Brook 15 lbs North
79.50	Intersected S & S line 60 lbs N. of corner	40.00	Temporary gr. Sec. post
	Same the same	79.50	Intersected S & S line 50 lbs N. of corner
West	Corrected		Same the same
39.75	gr. Sec. corner Sugar 10 S 56 E 12	West	Corrected
	Maple 12 S 15 W 13	39.75	gr. Sec. corner W. Oak 24 S 31 W 20
79.50	Section corner		B. Oak 15 S 42 E 22
North	Between Sec ^s 16 & 17	79.50	Section corner
33.00	H. B. Oak 15 in. diam.	North	Between Sec ^s 4 & 5
40.00	gr. Sec. corner Gum 6 S 44 E 7	35.00	H. Brook 150 lbs West
	B. Oak 12 S 33 W 20	40.00	gr. Sec. corner Beech 15 S 82 W 4
80.00	Set post corner to Sec ^s 8, 9, 16, 17		do 12 S 55 E 23
	W. Oak 15 S 63 W 8	76.86	Set post on N. Boundary 16 1/2 lbs E. of corner
	B. Oak 16 S 4 E 27		Beech 5 S 82 E 3
	Same the same		Poplar 20 S 73 W 30
East	Between Sec ^s 7 & 16 On Random		Same the same
40.00	Temporary gr. Sec. post	North	Between Sec ^s 31 & 32
79.59	Intersected S & S line 63 lbs N. of corner	34.50	H. Brook 10 lbs S. W
	Same the same	40.00	gr. Sec. corner W. Oak 12 S 61 E 15
West	Corrected		do 10 S 82 W 24
39.79 1/2	gr. Sec. corner Hickory 12 S 46 W 14	65.00	H. Brook 15 lbs S. W
	do 15 S 86 E 13	80.00	Set post corner to Sec ^s 29, 30, 31, 32
79.59	Section corner		Hickory 10 S 84 W 22
North	Between Sec ^s 8 & 9		W. Oak 30 S 24 E 33
33.50	H. B. Oak 30 in. diam.		Same the same
40.00	gr. Sec. corner Gum 15 S 41 W 12	East	Between Sec ^s 29 & 32 On Random
	Red bud 5 S 84 E 34	10.00	H. Brook 20 lbs S. W
80.00	Set post corner to Sec ^s 4, 5, 8, 9	12.50	H. Brook 20 lbs S. W
	Ironwood 3 S 8 E 14	15.00	H. Brook 20 lbs S. W
	W. Oak 30 S 2 W 12	40.00	Temporary gr. Sec. post
	Same the same	80.20	Intersected S & S line 40 lbs N. of corner
			Same the same

West Between Secs 29 & 32 Connected
40.10 gr. Sec. corner W. Oak 10 St 50. E 7
do 20 St 33 N 27
80.20 Section corner
North Between Secs 29 & 30
27.00 A. Brook 12 lks S. W
40.00 gr. Sec. corner W. Oak 12 St 58 N 9
June 10 St 73 E 11
74.50 A. Brook 10 lks S. E
80.00 Set post corner to Secs 19, 20, 29, 30
Maple 6 St 36 N 7
Dogwood 4 St 53 E
Land the same
East Between Secs 20 & 29 On Railroad
39.50 A. Brook 10 lks South
40.00 Temporary gr. Sec. post
55.50 A. Brook 10 lks South
80.12 Intersected St & S line 8 lks St. of corner
Land the same
West Corrected
40.06 gr. Sec. corner Beech 20 St 25 E 26
do 4 St 74 N 20
80.12 Section corner
North Between Secs 19 & 20
40.00 gr. Sec. corner Poplar 8 St 79 E 22
Ches. Oak 10 St 75 N 12
80.00 Set post corner to Secs 19, 18, 19, 20
Ches. Oak 15 St 40 E 10
W. Oak 15 St 52 N 24
Land the same
East Between Secs 17 & 20 On Railroad
10.00 A. Brook 12 lks St. W
40.00 Temporary gr. Sec. post
80.40 Intersected St & S line 48 lks St. of corner
Land the same

West Corrected Between Secs 17 & 20
40.20 gr. Sec. post W. Oak 10 St 4 E 12
B. Oak 10 St 46 E 12
80.40 Section corner
North Between Secs 17 & 18
29.65 A. W. Oak 18 in. diam.
40.00 gr. Sec. corner Sugar 15 St 80 N 14
Dogwood 3 St 64 N 16
70.50 A. Brook 15 lks St. W
80.00 Set post corner to Secs 7, 8, 17, 18
June 20 St 55 N 19
Beech 5 St 40 E 17
Land the same
East Between Secs 8 & 17 On Railroad
40.00 Temporary gr. Sec. post
80.32 Intersected St & S line 15 lks St. of corner
Land the same
West Corrected
40.16 gr. Sec. corner B. Oak 30 St 10 E 23
do 15 St 10 N 12
80.32 Section corner
North Between Secs 7 & 8
21.50 A. Brook 10 lks West
40.00 gr. Sec. corner Sugar 10 St 22 N 10
June 20 St 87 E 15
70.25 A. Brook 1.15 lks West
80.00 Set post corner to Secs 5, 6, 7, 8
June 5 St 60 E 6
Ironwood 3 St 51 N 7
Land the same
East Between Secs 5 & 8 On Railroad
14.00 A. Brook 15 lks South
40.00 Temporary gr. Sec. post
81.00 Intersected St & S line 18 lks St. of corner
Land the same

West Corrected Between Secs 5 & 8
40.50 gr. Sec. corner Dogwood 3 St 78 N 6
do 3 St 77 N 16
81.00 Section corner
North Between Secs 5 & 6
40.00 gr. Sec. corner Beech 7 St 66 E 15
do 10 St 71 E 34
72.65 Set post on N. Boundary 2.40 lks E. of corner
Elm 15 St 16 E 11
Maple 3 St 41 N 14
Land the same
West Between Secs 7 & 18
5.50 A. Brook 10 lks South
40.00 gr. Sec. corner W. Oak 15 St 16 N 7
Beech 4 St 87 E 15
61.75 Set post on N. Boundary 2.32 lks S. of corner
B. Oak 12 St 56 E 12
Beech 8 St 15 N 12
Land the same
West Between 18 & 19
40.00 gr. Sec. corner Salsaparilla 6 St 27 E 21
do 8 St 24 N 23
43.30 B. Oak 20 in. diam.
63.10 Set post on West Boundary 150 lks S. of corner
W. Oak 10 St 50 N 6
Beech 5 St 50 E 16
Land the same
West Between Secs 19 & 30
40.00 gr. Sec. corner Poplar 3 St 36 E 4
Ches. Oak 20 St 88 N 36
61.50 Set post on N. Boundary 19 lks St. of corner
W. Oak 30 St 32 E 48
do 15 St 65 N 28
Land the same

West Between Secs 30 & 31
40.00 gr. Sec. corner B. Oak 10 St 16 E 16
do 6 St 34 N 20
42.00 A. Brook 15 lks S. E
62.75 Set post on N. Boundary 46 lks S. of corner
W. Oak 40 St 46 E 50
Beech 8 St 50 E 23
Land the same
Surveyed by Arthur Harried L.
West Between Secs 6 & 7.
40.00 Set post, given which
Beech 17 St 41 E 104
do 20 St 13 N 11
61.65 Set post on N. Boundary 35 lks S. of corner from which
W. Oak 20 St 43 E 22
do 20 St 43 N 24
Land the same



Office of the Monroe County Surveyor
Trohn Enright-Randolph

Health Services Building
119 West 7th Street
Bloomington, IN 47404
Phone: (812) 349-2570

Dear User,

The following images were obtained in 2017 by the Office of the Monroe County Surveyor from the State Imaging and Microfilm Laboratory at the Indiana State Archives. The field notes and plats for Monroe County are stored on microfilm Reel 4658 at the Indiana State Archives. Each page provided by the State Imaging and Microfilm Laboratory is approximately 18MB. Our office combined the pages by Township & Range and reduced the resulting pdfs. This process may have caused some degradation in quality. We will provide unreduced images of specific pages if required. Please contact us at 812-349-2570 or at SurveyorsOffice@co.monroe.in.us to request a higher quality image of any specific page.

The pdfs are bookmarked with the original page numbers as assigned by the State Imaging and Microfilm Laboratory.

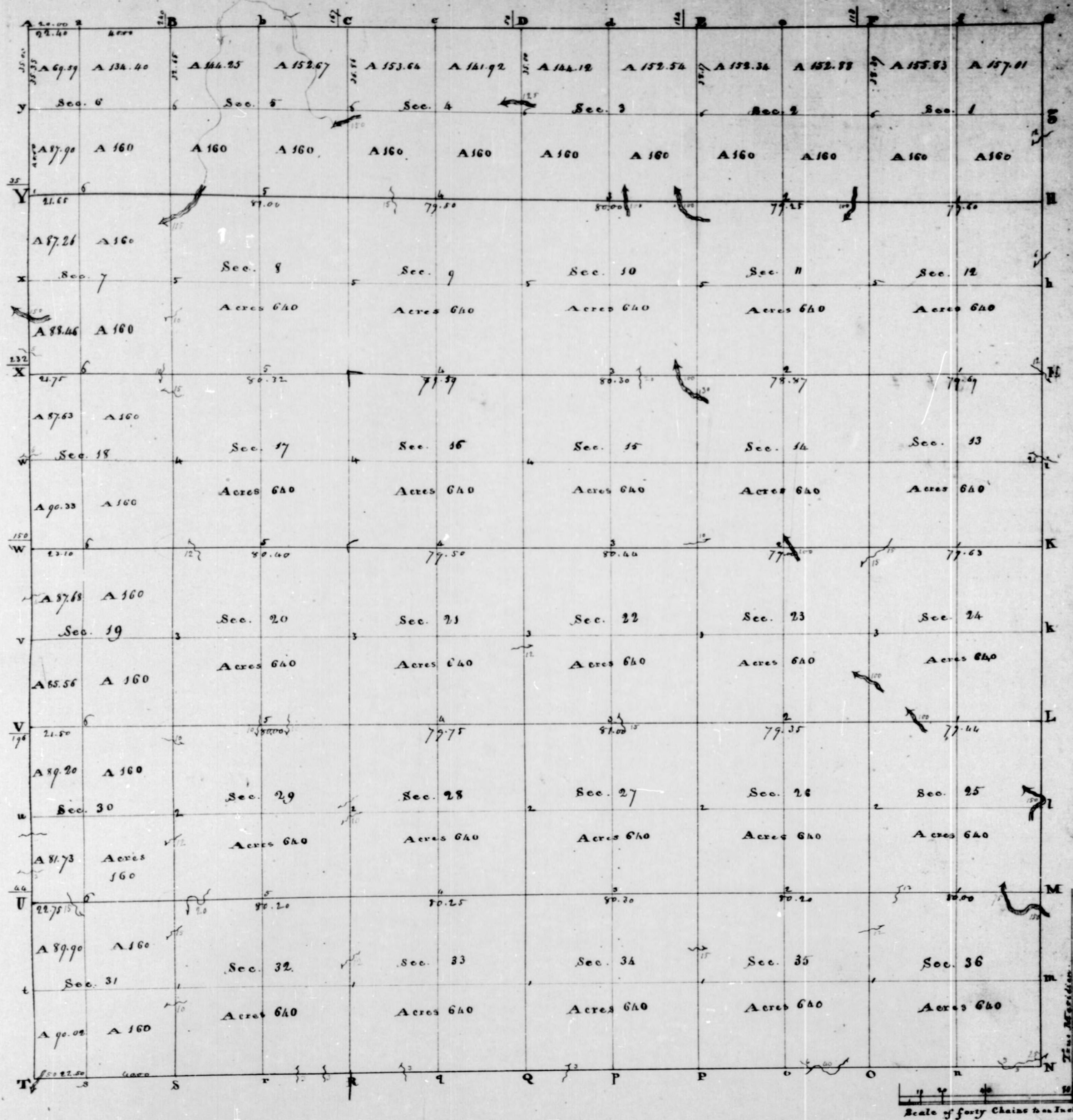
Be prepared to provide the county name, reel number, and the required page numbers when requesting full sized images.

If you would like a DVD of an entire county, please provide us with one DVD per county along with a self-addressed, stamped envelope.

Trohn Enright-Randolph
Monroe County Surveyor

T 7 N

R 2 E



Township N. VII North of the Base Line Range N. II East of 2nd Meridian. Surveyed by Arthur Henrie 1815

Description of the Soil on the interior Sectional lines.

Between Sections	Quality, &c.	Between Sections	Quality, &c.	Between Sections	Quality, &c.
33-34	Land Silty Thin Soil - Timber Chestnut, Oak & Hickory	33-34	Land Silty Thin Soil - Timber Chestnut, Oak & Hickory	31-32	Land Silty Thin Soil - Timber Chestnut, Oak & Hickory
25-26	ditto	27-28	ditto	29-30	ditto
23-24	ditto	25-26	ditto	27-28	ditto
21-22	ditto	23-24	ditto	25-26	ditto
19-20	ditto	21-22	ditto	23-24	ditto
17-18	ditto	19-20	ditto	21-22	ditto
15-16	ditto	17-18	ditto	19-20	ditto
13-14	ditto	15-16	ditto	17-18	ditto
11-12	ditto	13-14	ditto	15-16	ditto
9-10	ditto	11-12	ditto	13-14	ditto
7-8	ditto	9-10	ditto	11-12	ditto
5-6	ditto	7-8	ditto	9-10	ditto
3-4	ditto	5-6	ditto	7-8	ditto
1-2	ditto	3-4	ditto	5-6	ditto
35-36	ditto	33-34	ditto	31-32	ditto
33-34	ditto	31-32	ditto	29-30	ditto
31-32	ditto	29-30	ditto	27-28	ditto
29-30	ditto	27-28	ditto	25-26	ditto
27-28	ditto	25-26	ditto	23-24	ditto
25-26	ditto	23-24	ditto	21-22	ditto
23-24	ditto	21-22	ditto	19-20	ditto
21-22	ditto	19-20	ditto	17-18	ditto
19-20	ditto	17-18	ditto	15-16	ditto
17-18	ditto	15-16	ditto	13-14	ditto
15-16	ditto	13-14	ditto	11-12	ditto
13-14	ditto	11-12	ditto	9-10	ditto
11-12	ditto	9-10	ditto	7-8	ditto
9-10	ditto	7-8	ditto	5-6	ditto
7-8	ditto	5-6	ditto	3-4	ditto
5-6	ditto	3-4	ditto	1-2	ditto
3-4	ditto	1-2	ditto		

West		Subdivisions of Township 24 N. R. 2 E.	
40.00	On the South Side of Sec. 34 A. Poplar 36 S 20 W 7 O. Oak 16 S 81 E 15 } Hilly Oak land	North	Between Sec. 35 & 36
60.00	A. Brook 3 lks S. E	40.00	gr. Sec. corner Poplar 15 corner tree
80.00	Corner to Sec. 33 & 34 Chesnut 30 S 77 W 7 do 12 S 49 E 15 } Land same	66.50	A. Brook 12 lks S. E
West	On the South Side of Sec. 33	80.00	Set post corner to Sec. 25, 26, 35, 36 Beech 10 S 48 E 13 do 15 S 5 W 30
40.00	A. Hickory 24 S 4 E 8 } over hills & rough Chesnut Oak 12 S 17 E 15 } land. Oak. Chesnut	Land the same	East
58.00	A. Brook 3 lks S. W	13.00	A. Brook 15 lks S. E
80.00	Corner to Sec. 32 & 33 Chesnut Oak 18 S 45 E 9 } Hilly Oak land Dogwood 5 S 54 W 8 }	40.00	Temporary gr. Sec. post
West	On the South Side of Sec. 32	66.25	A. Brook 7.5 lks S. W
10.00	A. Brook 3 lks North	80.00	Intersected N. & S. line 10 lks S. of corner Land the same
25.00	Same - North	West	Corrected
40.00	A. W. Oak 10 S 20 E 11 } Hilly Oak land O. Oak 18 S 40 E 13 }	40.00	gr. Sec. corner O. Oak 10 S 36 E 20 do 6 S 61 W 13
80.00	Corner to Sec. 31 & 32 O. Oak 18 S 40 E 19 } Land the same W. Oak 8 S 84 W 34 }	80.00	Section corner
West	On the South Side of Sec. 31	North	Between Sec. 25 & 26
40.00	A. Hickory 7 S 55 W 25 do 7 S 63 E 31	40.00	gr. Sec. corner W. Oak 18 S 84 W 30 Hickory 3 S 4 E 10
61.00	A. Brook 50 lks S. W	80.00	Set post corner to Sec. 23, 24, 25, 26 O. Oak 30 S 42 W 15 Lynn 8 S 45 E 26
80.00	Set a temporary post Surveyed by Max. Holmes D. S.	Land the same	East
		Between Sec. 24 & 25 On Random	
		27.00	A. Brook 100 lks S. W
		40.00	Temporary gr. Sec. post
		79.44	Intersected N. & S. line at Sec. corner Land the same
		West	Between Sec. 24 & 25 Corrected
		39.72	gr. Sec. corner Lynn 12 S 85 E 5 Beech 5 S 78 W 26
		79.44	Section corner

North		North	
20.00	A. Brook 100 lks S. W	North	Between Sec. 11 & 12
40.00	gr. Sec. corner Beech 3 S 38 E 5 Poplar 4 S 14 W 6	15.72	A. Beech 15 in. diam.
75.00	A. Brook 15 lks S. W	40.00	gr. Sec. corner Beech 12 S 63 E 15 do 10 S 79 E 11
80.00	Set post corner to Sec. 13, 14, 23, 24 W. Oak 30 S 35 E 28 do 20 S 23 W 29	80.00	Set post corner to Sec. 1, 2, 11, 12 O. Oak 15 S 11 E 8 do 10 S 63 E 12
Land the same	East	Land the same	East
Between Sec. 13 & 24 On Random		Between Sec. 1 & 12 On Random	
10.15	A. Brook 15 lks S. W	40.00	Temporary gr. Sec. post
40.00	Temporary gr. Sec. post	79.60	Intersected N. & S. line 70 lks S. of corner Land the same
79.63	Intersected N. & S. line 80 lks S. of corner Land the same	West	Corrected
West	Corrected	39.80	gr. Sec. corner O. Oak 30 S 79 E 9 do 24 S 46 E 15
39.81 1/2	gr. Sec. corner O. Oak 15 S 29 W 4 Hickory - S 49 E 24	79.60	Section corner
79.63	Section corner	North	Between Sec. 1 & 2
North	Between Sec. 13 & 14	11.69	A. B. Oak 40 in. diam.
30.25	A. Sugar 15 in. diam.	40.00	gr. Sec. corner Beech 30 S 35 W 11 Elm 15 S 5 W 19
40.00	gr. Sec. corner Beech 15 S 60 E 15 O. Oak 20 S 12 E 23	78.39	Set post on N. Boundary 113 lks E. of corner Beech 15 S 89 W 7 W. Oak 24 S 66 W 15
80.00	Set post corner of Sec. 11, 12, 13, 14 Poplar 20 S 8 E 30 Beech 15 S 30 W 18	Land the same	North
Land the same		Between Sec. 34 & 35	
East	Between Sec. 12 & 13 On Random	40.00	gr. Sec. corner O. Oak 6 S 56 W 7 Hickory 3 S 32 W 7
40.00	Temporary gr. Sec. post	56.00	A. Brook 15 lks East
79.69	Intersected N. & S. line 28 lks S. of corner Land the same	80.00	Set post corner to Sec. 26, 27, 34, 35 O. Oak 15 S 33 E 6 Hickory 4 S 9 E 28
West	Corrected	Land the same	East
39.84 1/2	gr. Sec. corner Maple 15 S 25 E 11 W. Oak 14 S 45 E 6	Between Sec. 26 & 35 On Random	
79.69	Section corner	40.00	Temporary gr. Sec. post
		80.20	Intersected N. & S. line 25 lks S. of corner Land the same

West	Between Sec ^s 10 & 15 Corrected	80.00	Set post corner of Sec ^s 28, 29, 32, 33
40.15	gr. Sec. corner Dogwood 3 S 64 E 21		N. Oak 15 S 30 W 39
	do 3 S 10 E 12		Maple 4 S 36 E 33
80.30	Section corner		Same the same
North	Between Sec ^s 7 & 10	East	Between Sec ^s 28 & 33 On Random
35.00	H. Gum 20 in. diam.	40.00	Temporary gr. Sec. post
40.00	gr. Sec. corner Beech 12 S 31 W 8	80.25	Intersected N & S line 26 lts N. of corner
	do 12 S 64 E 19		Same the same
80.00	Set post corner to Sec ^s 3, 4, 9, 10	West	Corrected
	N. Oak 10 S 11 E 23	40.12 $\frac{1}{2}$	gr. Sec. corner B. Oak 8 S 32 W 23
	do 15 S 50 W 34		do 26 S 2 E 34
	Same the same	80.25	Section corner
East	Between Sec ^s 3 & 10 On Random	North	Between Sec ^s 28 & 29
40.00	Temporary gr. Sec. post	40.00	gr. Sec. corner B. Oak 10 S 33 W 13
45.00	H. Brook 100 lts S. W		do 4 S 25 E 18
70.00	H. Brook same	49.00	H. Brook 10 lts S. W
80.00	Intersected N & S line 50 lts N. of corner	80.00	Set post corner to Sec ^s 20, 21, 28, 29
	Same the same		Dogwood 3 S 32 E 4
West	Corrected		do 3 S 41 W 4
40.00	gr. Sec. corner Beech 10 S 48 E 13		Same the same
	do 15 S 19 W 24	East	Between Sec ^s 21 & 28 On Random
80.00	Section corner	40.00	Temporary gr. Sec. post
North	Between Sec ^s 3 & 4	79.75	Intersected N & S line 60 lts N. of corner
40.00	gr. Sec. corner Beech 30 S 87 W 29		Same the same
	do 5 S 10 E 25	West	Corrected
45.00	H. Brook 125 lts S. W	39.87 $\frac{1}{2}$	gr. Sec. corner Chestnut, Oak 12 S 25 W 18
75.00	Set post on N. Boundary 50 lts E. of corner		do 20 S 5 W 25
	Beech 10 S 30 E 10	79.75	Section corner
	do 8 S 49 W 20	North	Between Sec ^s 20 & 21
	Same the same	40.00	gr. Sec. corner. Chestnut, Oak 15 S 56 E 14
North	Between Sec ^s 32 & 33		Dogwood 3 S 50 W 10
40.00	gr. Sec. corner Hickory 6 S 42 W 8	80.00	Set post corner of Sec ^s 14, 17, 20, 21
	N. Oak 15 S 85 E 25		Gum 5 S 47 W 26
53.00	H. Brook 12 lts S. W		do 4 S 60 E 29
			Same the same

East	Between Sec ^s 16 & 21 On Random	East	Between Sec ^s 4 & 9 On Random
40.00	Temporary gr. Sec. post	21.00	H. Brook 15 lts North
79.50	Intersected N & S line 60 lts N. of corner	40.00	Temporary gr. Sec. post
	Same the same	79.50	Intersected N & S line 50 lts N. of corner
West	Corrected		Same the same
39.75	gr. Sec. corner Sugar 10 S 86 E 12	West	Corrected
	Maple 12 S 15 W 3	39.75	gr. Sec. corner N. Oak 24 S 31 W 20
79.50	Section corner		B. Oak 15 S 42 E 22
North	Between Sec ^s 16 & 17	79.50	Section corner
33.00	H. B. Oak 15 in. diam.	North	Between Sec ^s 4 & 5
40.00	gr. Sec. corner Gum 6 S 77 E 7	35.00	H. Brook 150 lts West
	B. Oak 12 S 83 W 20	40.00	gr. Sec. corner Beech 15 S 82 W 4
80.00	Set post corner to Sec ^s 8, 9, 16, 17		do 12 S 55 E 23
	N. Oak 15 S 63 W 8	76.86	Set post on N. Boundary 167 lts E. of corner
	B. Oak 16 S 4 E 27		Beech 5 S 82 E 3
	Same the same		Oxlar 20 S 73 W 30
East	Between Sec ^s 7 & 16 On Random		Same the same
40.00	Temporary gr. Sec. post	North	Between Sec ^s 31 & 32
79.59	Intersected N & S line 63 lts N. of corner	34.50	H. Brook 10 lts S. W
	Same the same	40.00	gr. Sec. corner N. Oak 12 S 61 E 15
West	Corrected		do 10 S 82 W 24
39.49 $\frac{1}{2}$	gr. Sec. corner Hickory 12 S 46 W 14	65.00	H. Brook 15 lts S. W
	do 15 S 86 E 13	80.00	Set post corner to Sec ^s 29, 30, 31, 32
79.59	Section corner		Hickory 10 S 84 W 22
North	Between Sec ^s 8 & 9		N. Oak 30 S 27 E 33
33.50	H. B. Oak 30 in. diam.		Same the same
40.00	gr. Sec. corner Gum 15 S 41 W 12	East	Between Sec ^s 29 & 32 On Random
	Red bark 5 S 87 E 34	10.00	H. Brook 20 lts S. W
80.00	Set post corner to Sec ^s 4, 5, 8, 9	12.50	H. Brook 20 lts S. W
	Dogwood 3 S 6 E 14	15.00	H. Brook 20 lts S. W
	N. Oak 30 S 2 W 12	40.00	Temporary gr. Sec. post
	Same the same	80.20	Intersected N & S line 40 lts N. of corner
			Same the same

West Between Sec^s 29 & 32 Corrected
 40.10 gr. Sec. corner N. Oak 10 St 50. E 7
 do 20 St 33. N 27
 80.20 Section corner
 North Between Sec^s 29 & 30
 27.00 A. Brook 12 lks S. W
 40.00 gr. Sec. corner N. Oak 12 St 68 N 9
 Gum 10 St 73 E 11
 74.50 A. Brook 10 lks S. E
 80.00 Set post corner to Sec^s 19, 20, 29, 30
 Maple 6 St 36 N 7
 Dogwood 4 St 53 E

Land the same

East Between Sec^s 20 & 29 On Railroad
 39.50 A. Brook 10 lks South
 40.00 Temporary gr. Sec. post
 55.50 A. Brook 10 lks South
 80.12 Intersected St & S line 8 lks St. of corner
 Land the same

West Corrected
 40.26 gr. Sec. corner Beech 20 St 25 E 26
 do 4 St 74 N 20

80.12 Section corner
 North Between Sec^s 19 & 20
 40.00 gr. Sec. corner Poplar 8 St 79 E 22
 Chis. Oak 10 St 75 N 12
 80.00 Set post corner to Sec^s 19, 18, 19, 20
 Chis. Oak 15 St 40 E 10
 N. Oak 15 St 52 N 24

Land the same

East Between Sec^s 17 & 20 On Railroad
 10.00 A. Brook 12 lks N. W
 40.00 Temporary gr. Sec. post
 80.40 Intersected St & S line 28 lks St. of corner
 Land the same

West Corrected Between Sec^s 17 & 20
 40.20 gr. Sec. post N. Oak 10 St 4 E 12
 B. Oak 10 St 46 E 12
 80.40 Section corner
 North Between Sec^s 17 & 18
 29.65 A. N. Oak 18 in. diam.
 40.00 gr. Sec. corner Sugar 15 St 80 N 17
 Dogwood 3 St 64 N 16
 70.50 A. Brook 15 lks N. W
 80.00 Set post corner to Sec^s 7, 8, 17, 18
 Gum 20 St 85 N 19
 Beech 5 St 40 E 17

Land the same

East Between Sec^s 8 & 17 On Railroad
 40.00 Temporary gr. Sec. post
 80.32 Intersected St & S line 15 lks St. of corner
 Land the same

West Corrected
 40.16 gr. Sec. corner B. Oak 30 St 10 E 23
 do 15 St 10 N 12

80.32 Section corner
 North Between Sec^s 7 & 8
 21.50 A. Brook 10 lks West
 40.00 gr. Sec. corner Sugar 10 St 22 N 10
 Gum 20 St 87 E 15
 70.25 A. Brook 1.15 lks West
 80.00 Set post corner to Sec^s 5, 6, 7, 8
 Gum 5 St 60 E 6
 Ironwood 3 St 51 N 7

Land the same

East Between Sec^s 5 & 8 On Railroad
 14.00 A. Brook 15.0 lks South
 40.00 Temporary gr. Sec. post
 81.00 Intersected St & S line 18 lks St. of corner
 Land the same

West Corrected Between Sec^s 5 & 8
 40.50 gr. Sec. corner Dogwood 3 St 78 N 16
 do 3 St 77 N 16
 81.00 Section corner
 North Between Sec^s 5 & 6
 40.00 gr. Sec. corner Beech 7 St 66 E 15
 do 10 St 71 E 34
 72.65 Set post on N. Boundary 2.40 lks E of corner
 Elm 15 St 6 E 11
 Maple 3 St 21 N 74

Land the same

West Between Sec^s 7 & 18
 5.50 A. Brook 10 lks South
 40.00 gr. Sec. corner N. Oak 15 St 16 N 7
 Hickory 4 St 87 E 15
 61.75 Set post on N. Boundary 2.32 lks S. of corner
 B. Oak 12 St 56 E 12
 Hickory 8 St 15 N 12

Land the same

West Between 18 & 19
 40.00 gr. Sec. corner Sassafras 6 St 27 E 21
 do 8 St 24 N 23
 43.30 B. Oak 20 in. diam.
 63.10 Set post on West Boundary 150 lks S. of corner
 N. Oak 10 St 50 N 6
 Beech 5 St 50 E 16

Land the same

West Between Sec^s 19 & 30
 40.00 gr. Sec. corner Poplar 3 St 36 E 4
 Chis. Oak 20 St 88 N 36
 61.50 Set post on N. Boundary 176 lks N. of corner
 N. Oak 30 St 32 E 48
 do 15 St 65 N 28

Land the same

West Between Sec^s 30 & 31
 40.00 gr. Sec. corner B. Oak 10 St 16 E 16
 do 6 St 34 N 20
 42.00 A. Brook 15 lks S. E
 62.75 Set post on N. Boundary 46 lks S. of corner
 N. Oak 40 St 46 E 50
 Hickory 8 St 50 E 23
 Land the same
 Surveyed by Arthur Howard L.

West Between Sec^s 6 & 7.
 40.00 Set 1/4 post, given which
 Beech 17 St 41 E 10 +
 do 20 St 13 N 11
 61.65 Set post on N. Boundary 35 lks S. of corner from which
 N. Oak 20 St 43 E 22
 do 20 St 43 N 24
 Land same